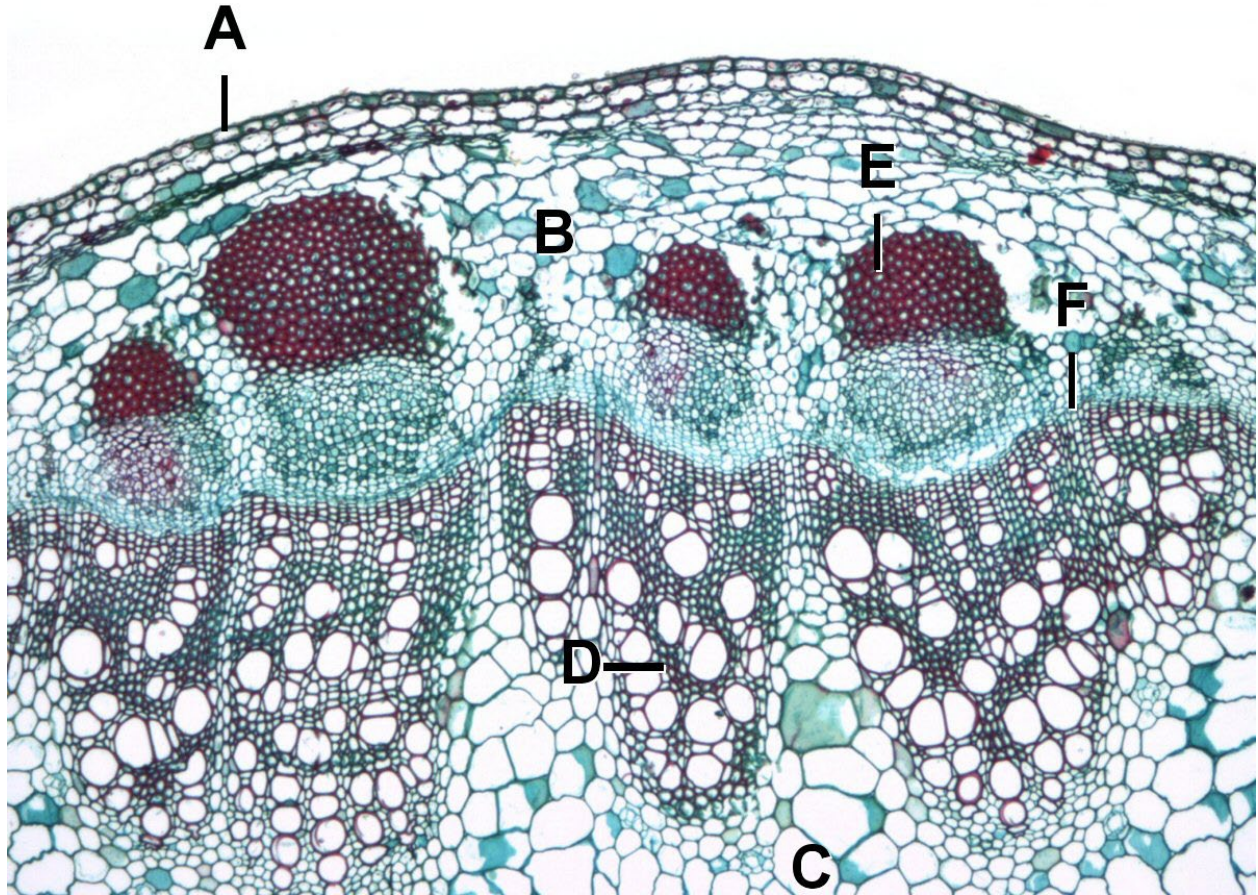


Praxis 2: Physics of Worldshaping Site, tectonics, analysis, and imagination

Azadeh Sawyer/Matt Huber



Photomicrograph of a *Helianthus* stem. A-Epidermis, B-Cortex, C-Pith, D-Xylem, E-Phloem fibers, F-Vascular cambium. Scale=0.2mm.

Architecture transforms and shapes relations between individuals, communities, objects and environments. Praxis 2 will continue to understand architecture as a modulator of complex cultural and historical flows, but will aim to do so by intensively exploring, evaluating, and expanding the role that tectonic cultures and their associated modes of architectural expression play in shaping our world.

Through a non-linear/multi-scalar, iterative design process, students will develop and refine detailed architectural assemblies attuned to methods of construction, craft, and labor practices; to the role of structural configurations in organizing the spatial distribution of occupancies and human experiences; to how envelopes regulate and respond to thermal and visual performance while also participating in aesthetic discourse; to ecological synergies and impacts; to modes of participation in carbon culture; and ultimately to the disciplinary imperative to integrate and orchestrate these multiple forces and systems.