

REYANHLI REFUGEE SCHOOL FOR YOUNG WOMEN

مدرسة اللاجئين للنساء

LOCATION FOR PROTOTYPE
REYANHLI REFUGEE CAMP, HATAY PROVINCE, TURKEY

REYANHLI IS SITUATED ALONG THE BORDER OF NORTHERN SYRIA AND SOUTHEAST TURKEY. THIS SITE PRESENTS BOTH MEDITERRANEAN AND DESERT CLIMATIC CONSIDERATIONS TYPICAL OF CAMPS IN THE REGION. THIS HAS BEEN USED TO DEMONSTRATE THIS MODULAR AND RECONFIGURABLE CONSTRUCTION SYSTEM.



PAVED STREET CONDITION IN CAMP
SOURCE: THE GUARDIAN.COM



TENT CONFIGURATION
SOURCE: UK REUTERS.COM



ENCAMPMENT PERIMETER
SOURCE: NOORMAGES.COM



ACTIVITIES FOR YOUTH
SOURCE: PRIORG

OBJECTIVES

PROTECTION: ROBUST APPEARANCE AND PRIVACY

THIS MODULAR SYSTEM IS BUILT OF DOUBLE FRAME BAY TIMBER STRUCTURE WITH THICK CAVITY WALLS AND STUCCO ON CEMENT BOARD SHEATHING. THIS ALLOWS THESE MOVEABLE BUILDING ELEMENTS TO APPEAR ROBUST AND FLEXIBLE FOR SEISMIC ACTIVITY. IN ADDITION, LOUVERED PANELS MADE OF COLORED ROPE PROVIDE PRIVACY FOR STUDENTS. ON THE SITE, A COURTYARD LAYOUT IS USED TO ENHANCE PRIVACY, AS WELL AS FOR PASSIVE CONDITIONING.

ACCESS TO HEALTH EDUCATION AND SERVICES

IN ORDER TO HELP STUDENTS STAY HEALTHY, THE SCHOOL PROVIDES AN ADDITIONAL CLASSROOM FOR VISITING MEDICAL CARE AND EDUCATION OF THE HUMAN BODY. TO TEACH STUDENTS ABOUT HEALTHY AND RESOURCEFUL NUTRITION, THE SCHOOL IMPLEMENTS AN EDIBLE GARDEN AND SPACE FOR STUDENTS TO HELP PREPARE MEALS.

TACTILE ENVIRONMENT FOR LEARNING

TO CREATE A MORE STIMULATING AND DIVERSE LEARNING ENVIRONMENT, THE INTERIOR OF THE BUILDING UTILIZES DIVERSE MATERIALS, LIKE PLYWOOD FINISHES AND SCRAP WOOD FLOORING, DYED RECYCLED ROPE SHADING DEVICES, AND LOCALLY MADE FABRIC FOR COLORFUL CEILING FINISHES. INTERIOR CHALKBOARDS AND PIN BOARD WALL FINISHES ALLOW STUDENTS TO DISPLAY WORK AND SHARE IDEAS.

LOCAL MATERIALS, MODULAR ASSEMBLY AND RECONFIGURABILITY

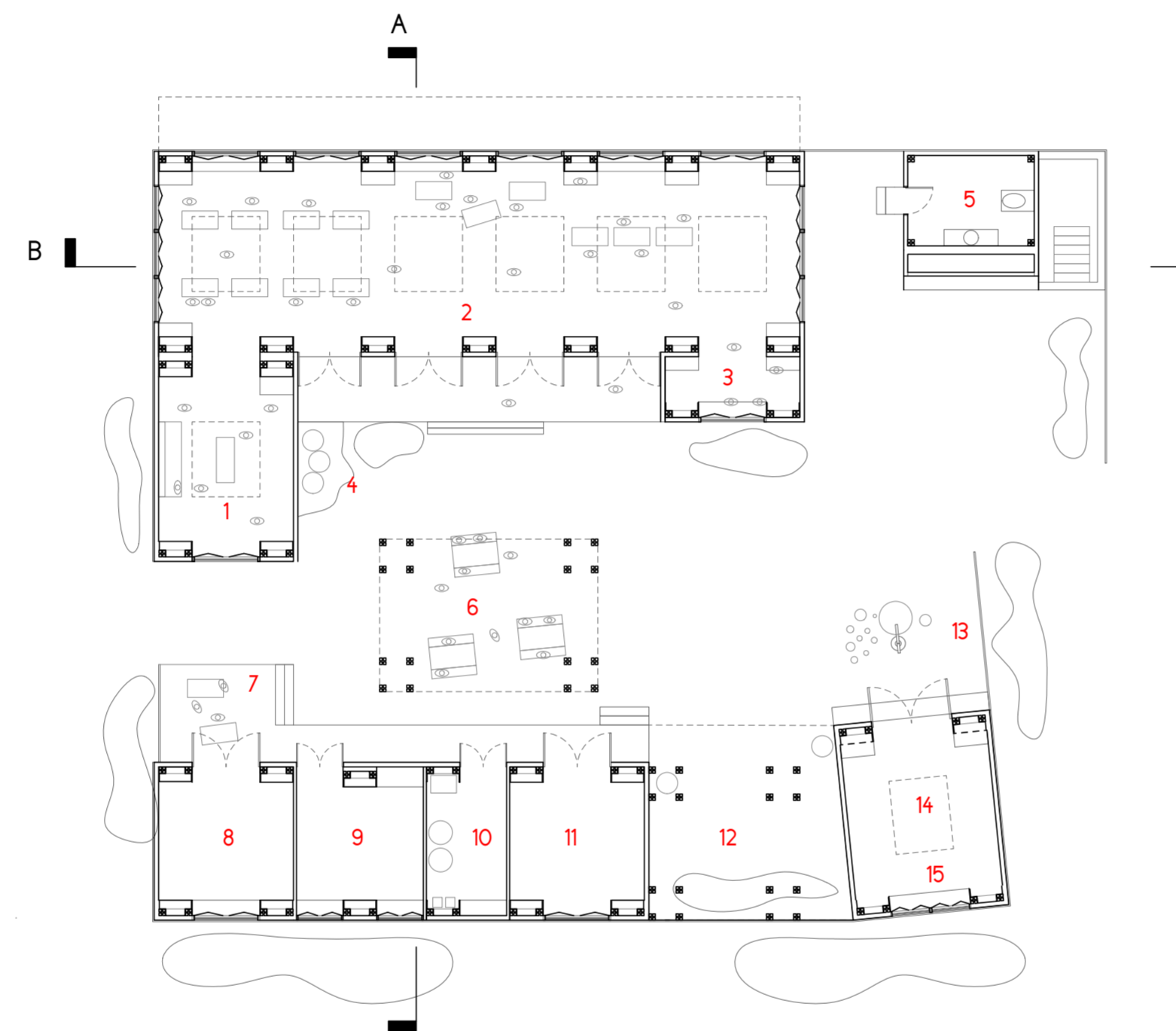
PREFABRICATED MODULAR BUILDING UNITS ARE ASSEMBLED USING DIMENSIONAL LUMBER AND AFFORDABLE MATERIALS PREDOMINANTLY PRODUCED IN THE REGION. THEY CAN BE ADJUSTED DIMENSIONALLY AND RELOCATED FOR SHIFTING SPATIAL NEEDS. THE PREFABRICATED BAYS ALLOW FOR SMALL CONCRETE FOOTINGS TO DECREASE THE IMPACT OF THE BUILDING ON SITE. ADDITIONALLY, THE ORTHOGONAL STRUCTURAL BAYS ALLOW INFILLING PANELS TO BE RECONFIGURED FOR QIBLA ORIENTATION.

SHADING, PASSIVE CONDITIONING, AND WATER COLLECTION

TO CREATE A CONDUCIVE ENVIRONMENT FOR LEARNING WITH MINIMAL UTILITIES, THIS PROPOSAL USES RECYCLED ROPE SHADING DEVICES OF VARIOUS FORMS, HEAT INDUCED VENTILATION COMBINED WITH CROSS VENTILATION, HEAVILY INSULATED, SOLID WALLS FOR SWING TEMPERATURE AND WINTER WEATHER. A COURTYARD SCHEME IS UTILIZED TO CREATE COOLER AIR AND INCREASE OUTDOOR SHADED AREA. ALSO, SLANTED ROOFS WITH GUTTERS COLLECT WATER INTO BARRELS WITH SAND FILTERS FOR ON SITE USE.

POST CONFLICT STRATEGY

AFTER THE REFUGEE CAMPS ARE NO LONGER NEEDED OR LESS FLEXIBILITY IN LIVING ARRANGMENTS ARE NEEDED, THESE BUILDING MODULES HAVE BEEN ASSEMBLED WITH SPACE FOR DUCTWORK, PLUMBING, AND SOLAR PANEL INSTALLATION.



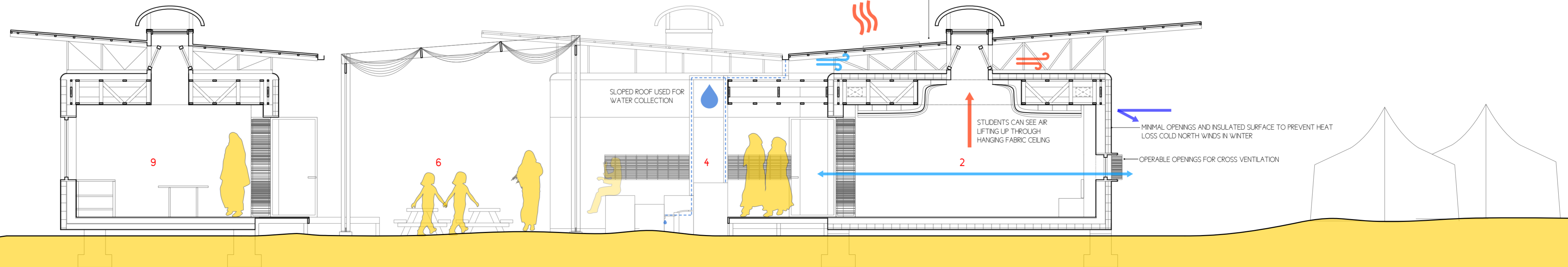
SCHOOL PLAN
SCALE: 1/16" = 1'-0"



SITE PLAN IN REYANHLI REFUGEE CAMP
SCALE: 1/32" = 1'-0" SOURCE: CAMP LOCATED ON GOOGLE MAPS BY [HTTP://DATA.UNHCR.ORG/](http://data.unhcr.org/)

PROGRAM

1. HEALTH AND THE HUMAN BODY CLASSROOM
2. PRIMARY CLASSROOM
3. PRIVATE STUDY AND STUDENT TO TEACHER CONFERENCE SPACE
4. WATER GARDEN
5. SOLAR COMPOSTING BATHROOM (ORIENTED PERPENDICULAR TO QIBLA)
6. SHADED COURTYARD FOR OUTDOOR LEARNING AND MAKING
7. STUDENT FOOD PREP
8. KITCHEN
9. STORAGE
10. UTILITY ROOM
11. ADMINISTRATIVE OFFICE
12. EDIBLE CLASSROOM
13. FOUNTAIN FOR ABLUTIONS
14. PRAYER SPACE
15. QIBLA



SECTION A
SCALE: 1/4" = 1'-0"