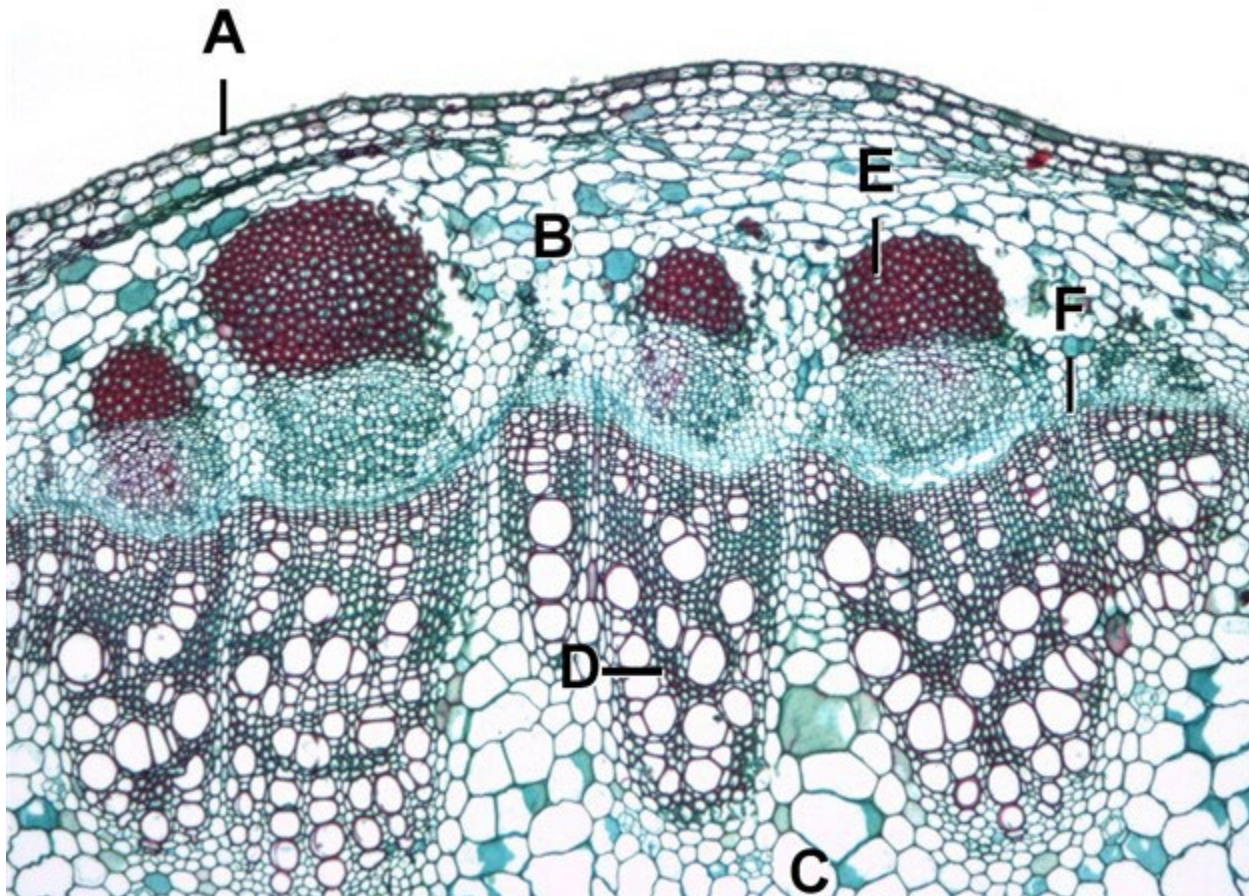


CARNEGIE MELLON —ARCHITECTURE



Photomicrograph of a Helianthus stem. A-Epidermis, B-Cortex, C-Pith, D-Xylem, E-Phloem fibers, F-Vascular cambium. Scale=0.2mm.

48-640: M.Arch Studio – Praxis II: deMASSing TIMBER

Units: 18

Instructors: Azadeh Sawyer, Matthew Huber, Jeffrey Davis

Architecture shapes societal relationships and environments. This studio explores the role of tectonic cultures in molding our world and investigates strategies to deMASS TIMBER, promoting responsible wood usage. Through a non-linear, multi-scalar design process, teams develop intricate architectural assemblies, considering construction methods, structural design, thermal and visual performance, aesthetics and ecological impacts. This extends to participation in carbon culture and integration with urban contexts. Students refine their design skills while addressing complex site, program, climate and aesthetic challenges. They utilize technologies like daylighting and radiation simulation, and virtual reality to create spaces that synchronize with the environment and engage human perception.

